

# SH 121 & SH 26

SOUTHWEST CORNER OF SH 121 & SH 26, GRAPEVINE, TEXAS 76051



Greenway Investment Company

## PROPERTY OVERVIEW

Commercial property adjacent to Bass Pro Shops and Grapevine Mills Mall at the intersection of SH 121 & SH 26. Excellent highway visibility with close proximity to regional attractions.

## DETAILS

2.438 acres

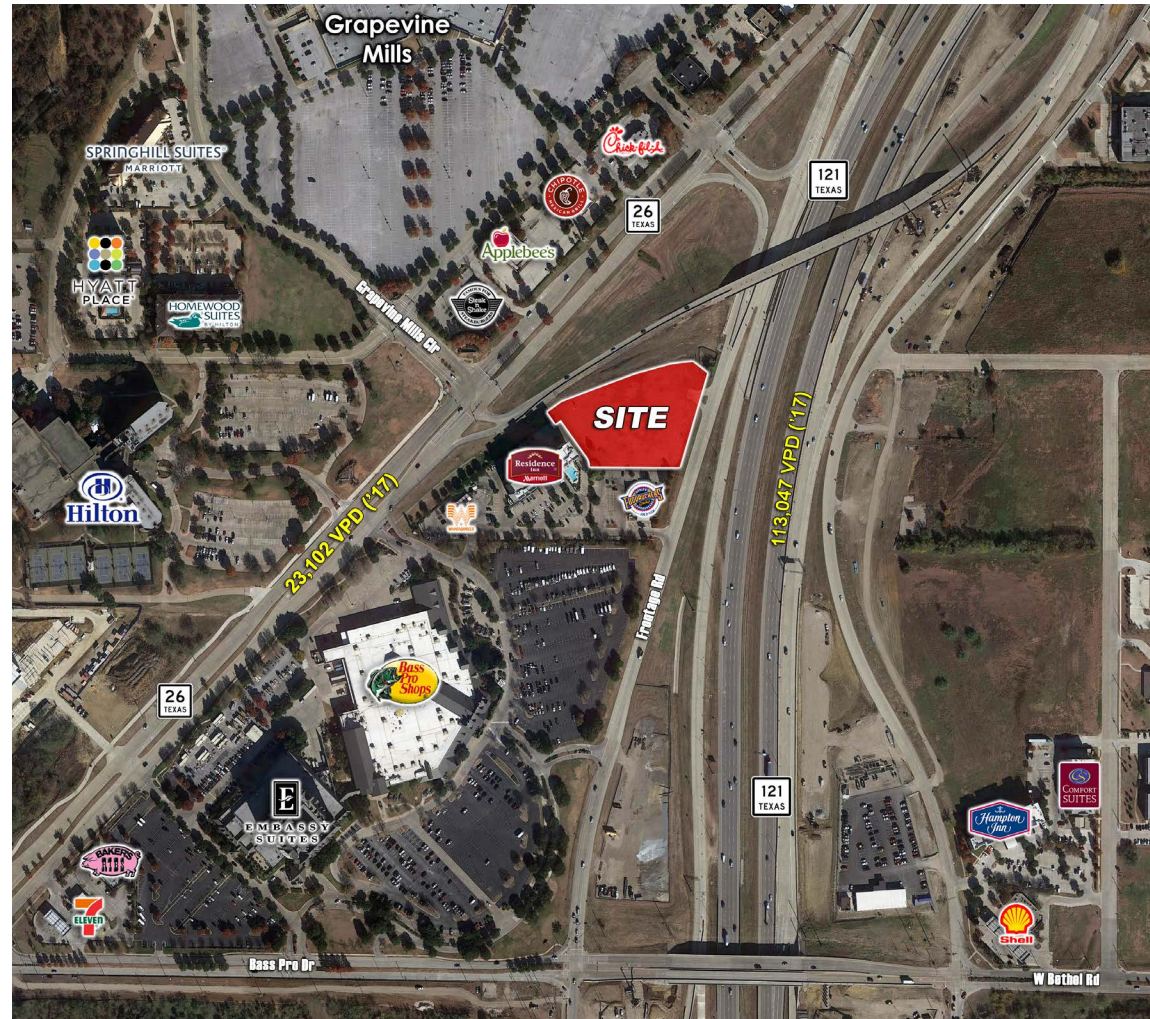
“CC” – Community Commercial Zoning

## TRAFFIC COUNTS

|             |                       |
|-------------|-----------------------|
| Highway 26  | 23,102 VPD TxDot '17  |
| Highway 121 | 113,047 VPD TxDot '17 |

## DEMOGRAPHICS

|                      | 1 mile   | 3 mile    | 5 mile    |
|----------------------|----------|-----------|-----------|
| 2018 Est. Population | 2,933    | 31,539    | 162,845   |
| Avg. HH Income       | \$84,043 | \$121,075 | \$115,377 |
| Daytime Population   | 6,761    | 62,789    | 203,815   |
| Median Home Value    | \$37,069 | \$317,444 | \$280,569 |



RYAN PETTY | [rpetty@greenwayinvestment.com](mailto:rpetty@greenwayinvestment.com) | 214-699-4845

The information contained herein was obtained from sources deemed reliable; however, Greenway Investment makes no guarantees, warranties or representations as to the completeness or accuracy thereof. The presentation of this information is subject to errors; omissions; change of price; prior sale or lease; or withdrawal without notice.

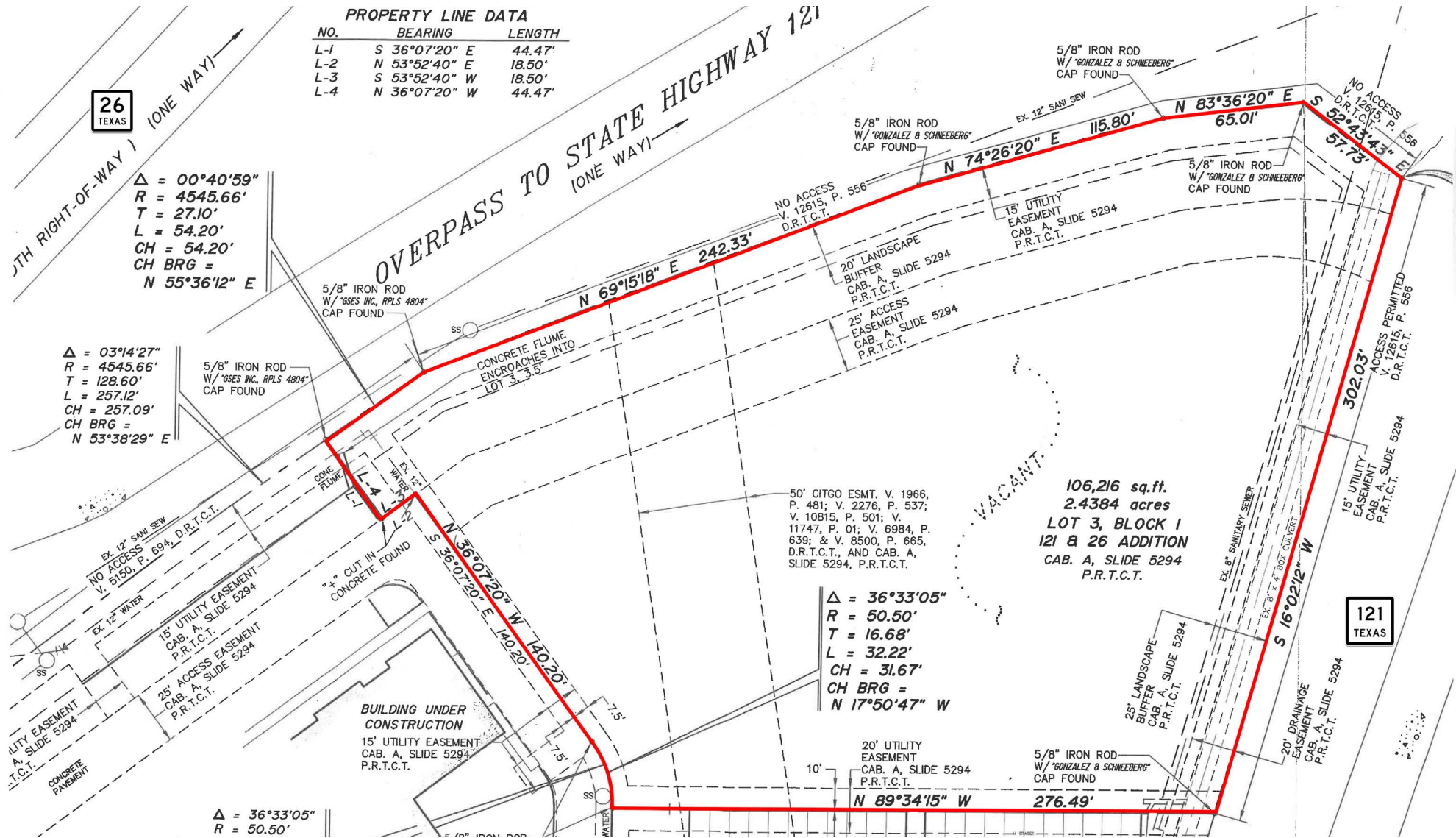


# SH 121 & SH 26

SOUTHWEST CORNER OF SH 121 &amp; SH 26, GRAPEVINE, TEXAS 76051



## Greenway Investment Company



RYAN PETTY | [rpetty@greenwayinvestment.com](mailto:rpetty@greenwayinvestment.com) | 214-699-4845

The information contained herein was obtained from sources deemed reliable; however, Greenway Investment makes no guarantees, warranties or representations as to the completeness or accuracy thereof. The presentation of this information is subject to errors; omissions; change of price; prior sale or lease; or withdrawal without notice.



# SH 121 & SH 26

SOUTHWEST CORNER OF SH 121 & SH 26, GRAPEVINE, TEXAS 76051



Greenway Investment Company



RYAN PETTY | [rpetty@greenwayinvestment.com](mailto:rpetty@greenwayinvestment.com) | 214-699-4845

The information contained herein was obtained from sources deemed reliable; however, Greenway Investment makes no guarantees, warranties or representations as to the completeness or accuracy thereof. The presentation of this information is subject to errors; omissions; change of price; prior sale or lease; or withdrawal without notice.