

# Hazlewood & Klas Land

NORTHWEST CORNER OF HAZLEWOOD ROAD AND KLAS ROAD, SHERMAN, TEXAS 75092



Greenway Investment Company

## PROPERTY OVERVIEW

214 acre agriculturally-exempt property located in Grayson County along the future Dallas North Tollway alignment. In between Whitesboro and Sherman south of US 82.

## DETAILS

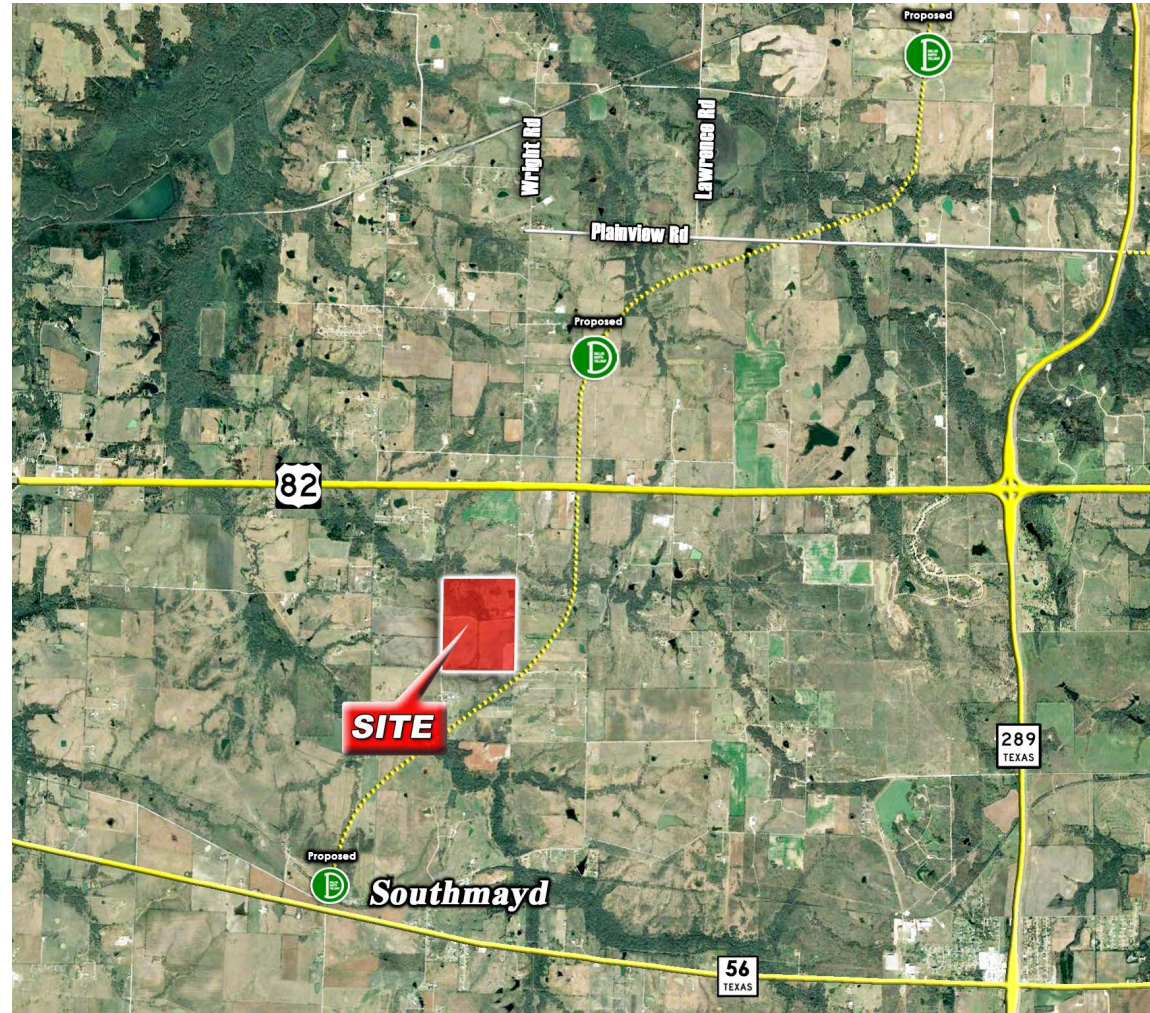
214.36 Acres Available  
Agriculturally Exempt

## TRAFFIC COUNTS

Highway 82	17,773 VPD TxDot '17
Preston Road	5,217 VPD TxDot '17

## DEMOGRAPHICS

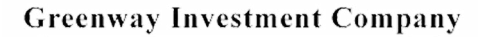
	5 mile	7 mile	10 mile
2018 Est. Population	2,831	6,753	49,132
Daytime Population	2,035	5,010	52,669
Avg. HH Income	\$86,880	\$89,729	\$70,799
Median Home Value	\$237,083	\$236,602	\$162,839



RYAN PETTY | [rpetty@greenwayinvestment.com](mailto:rpetty@greenwayinvestment.com) | 214-699-4845

The information contained herein was obtained from sources deemed reliable; however, Greenway Investment makes no guarantees, warranties or representations as to the completeness or accuracy thereof. The presentation of this information is subject to errors; omissions; change of price; prior sale or lease; or withdrawal without notice.

## NORTHWEST CORNER OF HAZLEWOOD ROAD AND KLAS ROAD, SHERMAN, TEXAS 75092



The information contained herein was obtained from sources deemed reliable; however, Greenway Investment makes no guarantees, warranties or representations as to the completeness or accuracy thereof. The presentation of this information is subject to errors; omissions; change of price; prior sale or lease; or withdrawal without notice.

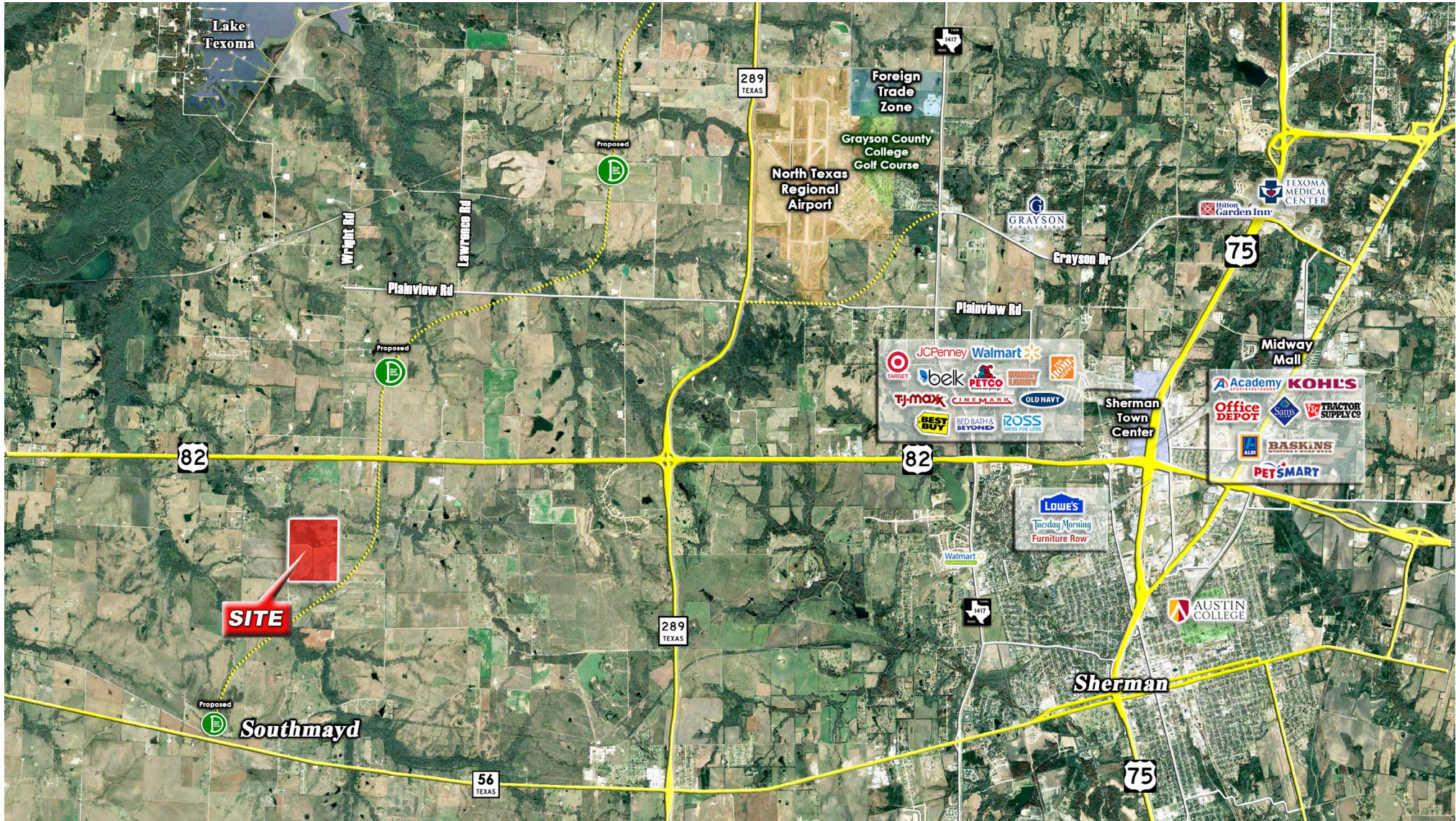


# Hazlewood & Klas Land

NORTHWEST CORNER OF HAZLEWOOD ROAD AND KLAS ROAD, SHERMAN, TEXAS 75092



Greenway Investment Company



RYAN PETTY | [rpetty@greenwayinvestment.com](mailto:rpetty@greenwayinvestment.com) | 214-699-4845

The information contained herein was obtained from sources deemed reliable; however, Greenway Investment makes no guarantees, warranties or representations as to the completeness or accuracy thereof. The presentation of this information is subject to errors; omissions; change of price; prior sale or lease; or withdrawal without notice.