

FM 720 & U.S. 380

SOUTHWEST CORNER OF FM 720 AND US 380 SOUTHEAST DENTON COUNTY, TEXAS



Greenway Investment Company

PROPERTY OVERVIEW

Situated between Prosper & Denton, this unique retail opportunity features prime frontage on Highway 380. Located directly across the street from a Walmart Supercenter.

DETAILS

57.118 Acres Available
44.318 Net of Flood
Pad Sites Available - 1 Acre Minimum

TRAFFIC COUNTS

FM 720 12,505 VPD TxDot '17
US 380 37,362 VPD TxDot '17

DEMOGRAPHICS

	1 mile	3 mile	5 mile
2018 Est. Population	5,291	29,233	66,026
Avg. HH Income	\$108,481	\$106,867	\$99,213
Daytime Population	4,353	18,278	39,704
Medium Home Value	\$184,343	\$191,843	\$193,622



RYAN PETTY | rpetty@greenwayinvestment.com | 214-880-9009 Ext. 2240

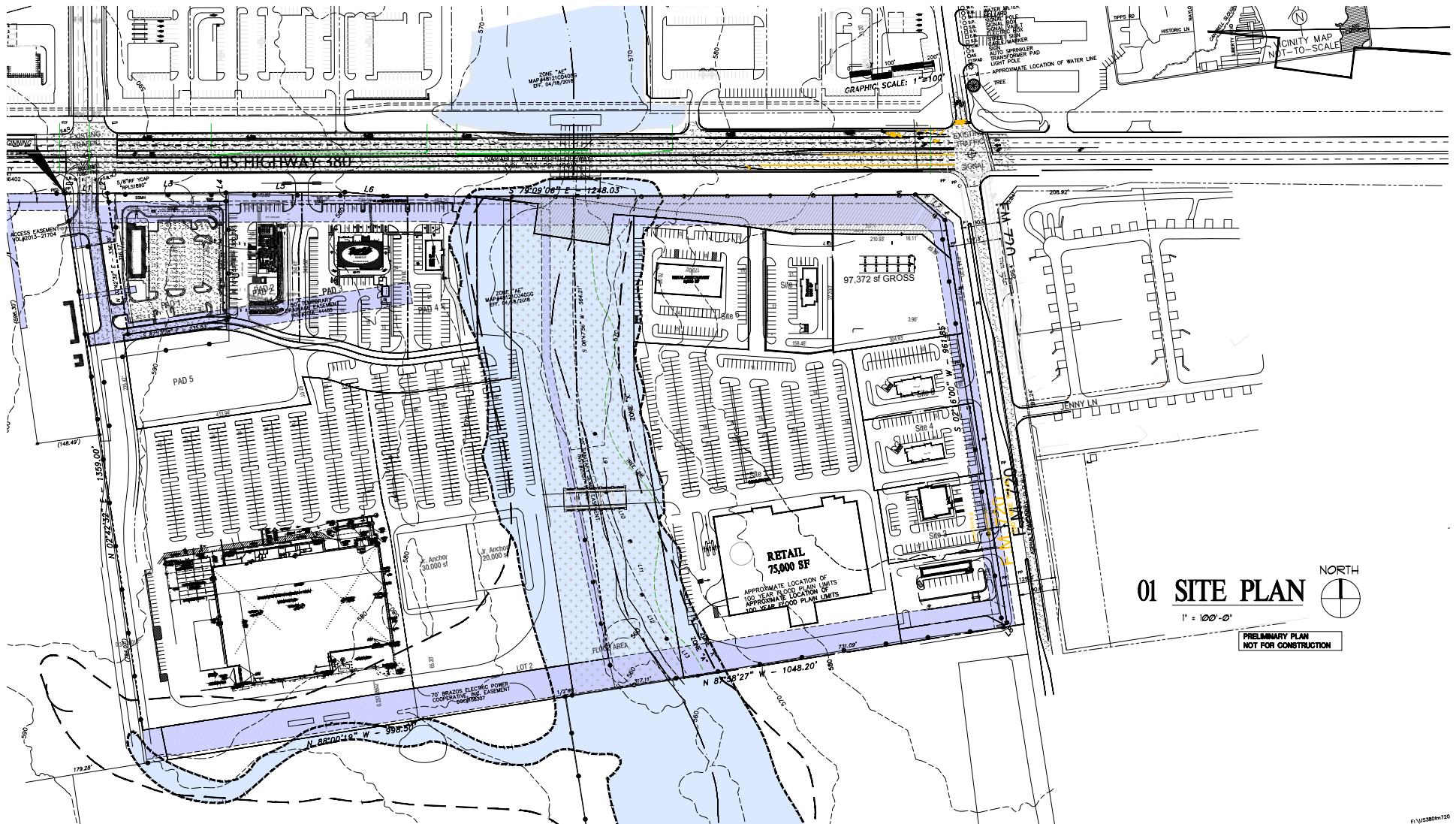
The information contained herein was obtained from sources deemed reliable; however, Greenway Investment makes no guarantees, warranties or representations as to the completeness or accuracy thereof. The presentation of this information is subject to errors; omissions; change of price; prior sale or lease; or withdrawal without notice.

FM 720 & U.S. 380

SOUTHWEST CORNER OF FM 720 AND US 380 SOUTHEAST DENTON COUNTY, TEXAS



Greenway Investment Company



RYAN PETTY | rpetty@greenwayinvestment.com | 214-880-9009 Ext. 2240

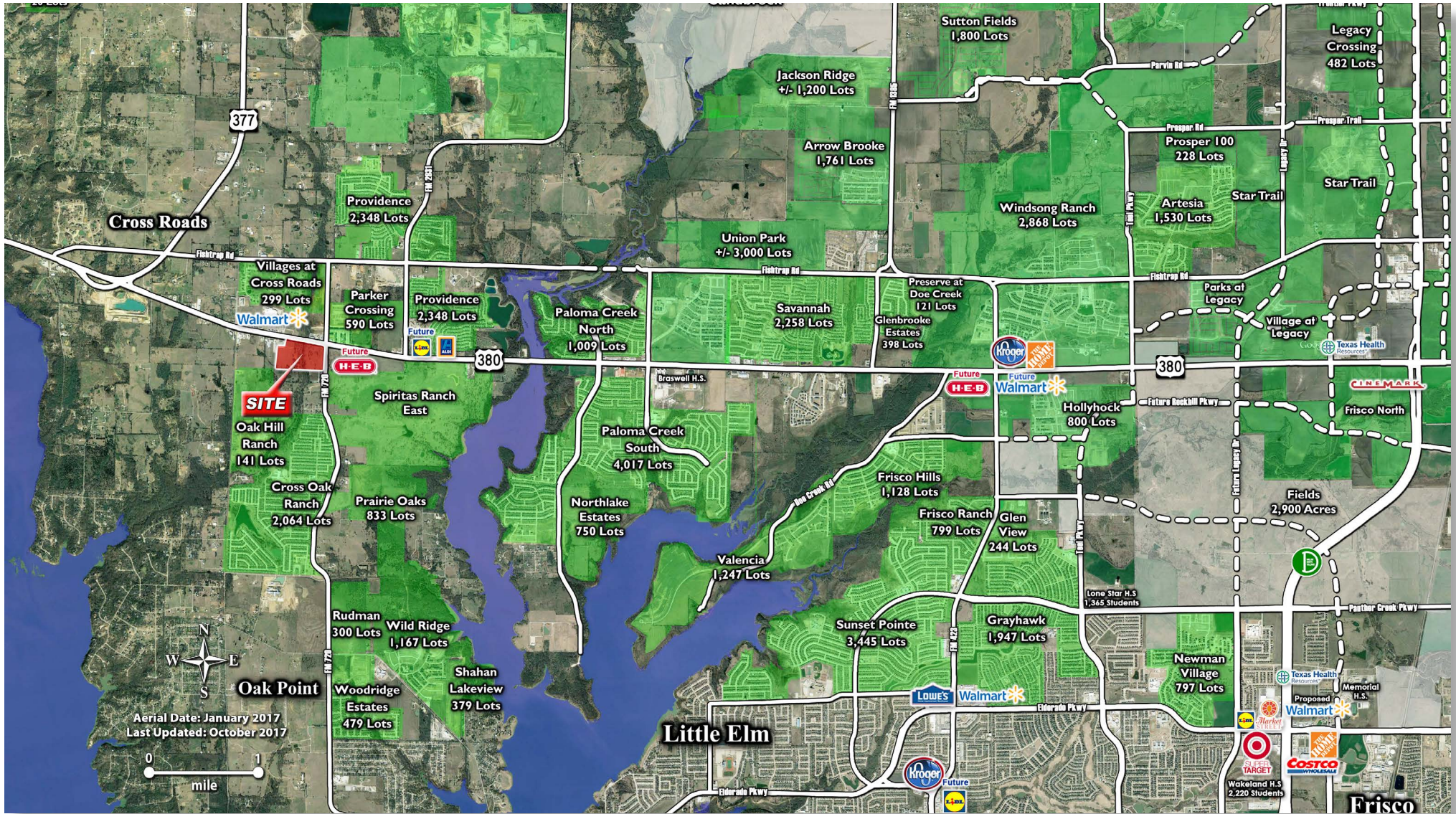
The information contained herein was obtained from sources deemed reliable; however, Greenway Investment makes no guarantees, warranties or representations as to the completeness or accuracy thereof. The presentation of this information is subject to errors; omissions; change of price; prior sale or lease; or withdrawal without notice.

FM 720 & U.S. 380

SOUTHWEST CORNER OF FM 720 AND US 380 SOUTHEAST DENTON COUNTY, TEXAS



Greenway Investment Company



RYAN PETTY | rpetty@greenwayinvestment.com | 214-880-9009 Ext. 2240

The information contained herein was obtained from sources deemed reliable; however, Greenway Investment makes no guarantees, warranties or representations as to the completeness or accuracy thereof. The presentation of this information is subject to errors; omissions; change of price; prior sale or lease; or withdrawal without notice.