

# Eldorado Parkway & FM 720

NWC, NEC & SOUTH OF FM 720 & ELDORADO PARKWAY, LITTLE ELM, TEXAS



Greenway Investment Company

## PROPERTY OVERVIEW

NTTA has completed the Lewisville Lake Toll Bridge, which connects Swisher Road and Eldorado Parkway, and enables motorists to travel from IH 35E in Lewisville to the Dallas North Tollway in Frisco.

## DETAILS

+/- 29 Acres of Pad Sites & Retail

Zoned: C-1 Light Commercial & A-1 Single Family Residential

## TRAFFIC COUNTS

Eldorado Parkway	21,823 VPD Town of Little Elm '18
FM 720/Oak Grove Parkway	23,438 VPD Town of Little Elm '18

## DEMOGRAPHICS

	1 mile	3 mile	5 mile
2018 Est. Population	2,809	23,806	116,261
5 Year Projected Growth	20.0%	19.7%	20.85%
Avg. HH Income	\$88,309	\$93,824	\$109,322
Median Home Value	\$179,362	\$186,935	\$215,929



RYAN PETTY | [rpetty@greenwayinvestment.com](mailto:rpetty@greenwayinvestment.com) | 214-880-9009 Ext. 2240

The information contained herein was obtained from sources deemed reliable; however, Greenway Investment makes no guarantees, warranties or representations as to the completeness or accuracy thereof. The presentation of this information is subject to errors; omissions; change of price; prior sale or lease; or withdrawal without notice.

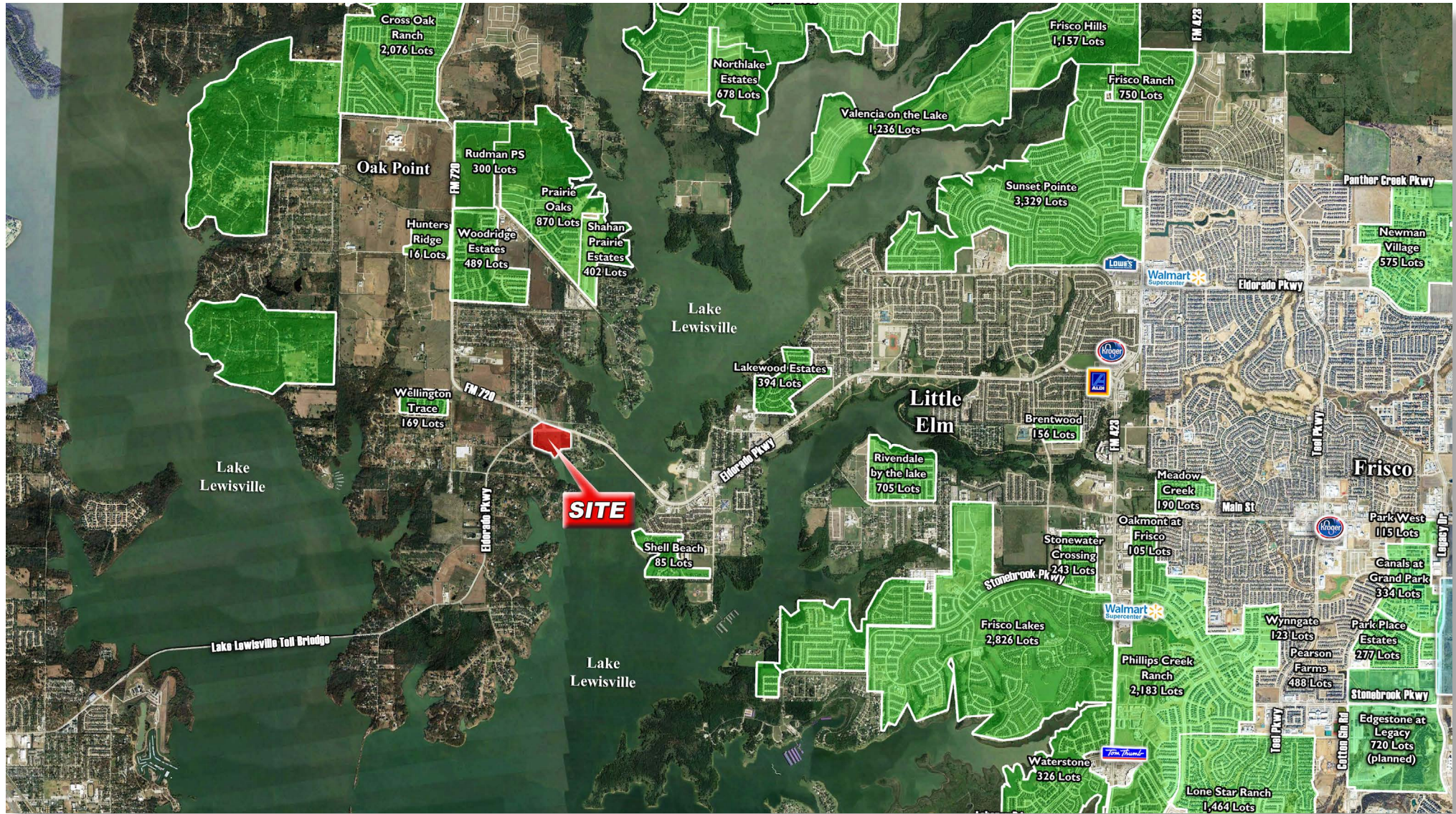


# Eldorado Parkway & FM 720

NWC, NEC & SOUTH OF FM 720 & ELDORADO PARKWAY, LITTLE ELM, TEXAS



Greenway Investment Company



RYAN PETTY | [rpetty@greenwayinvestment.com](mailto:rpetty@greenwayinvestment.com) | 214-880-9009 Ext. 2240

The information contained herein was obtained from sources deemed reliable; however, Greenway Investment makes no guarantees, warranties or representations as to the completeness or accuracy thereof. The presentation of this information is subject to errors; omissions; change of price; prior sale or lease; or withdrawal without notice.